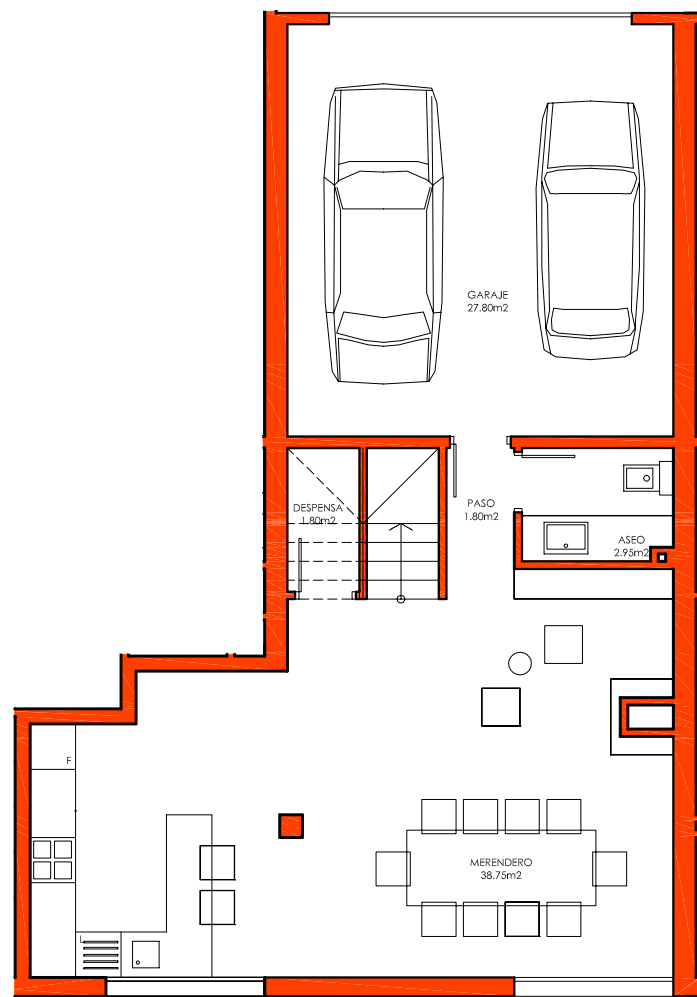
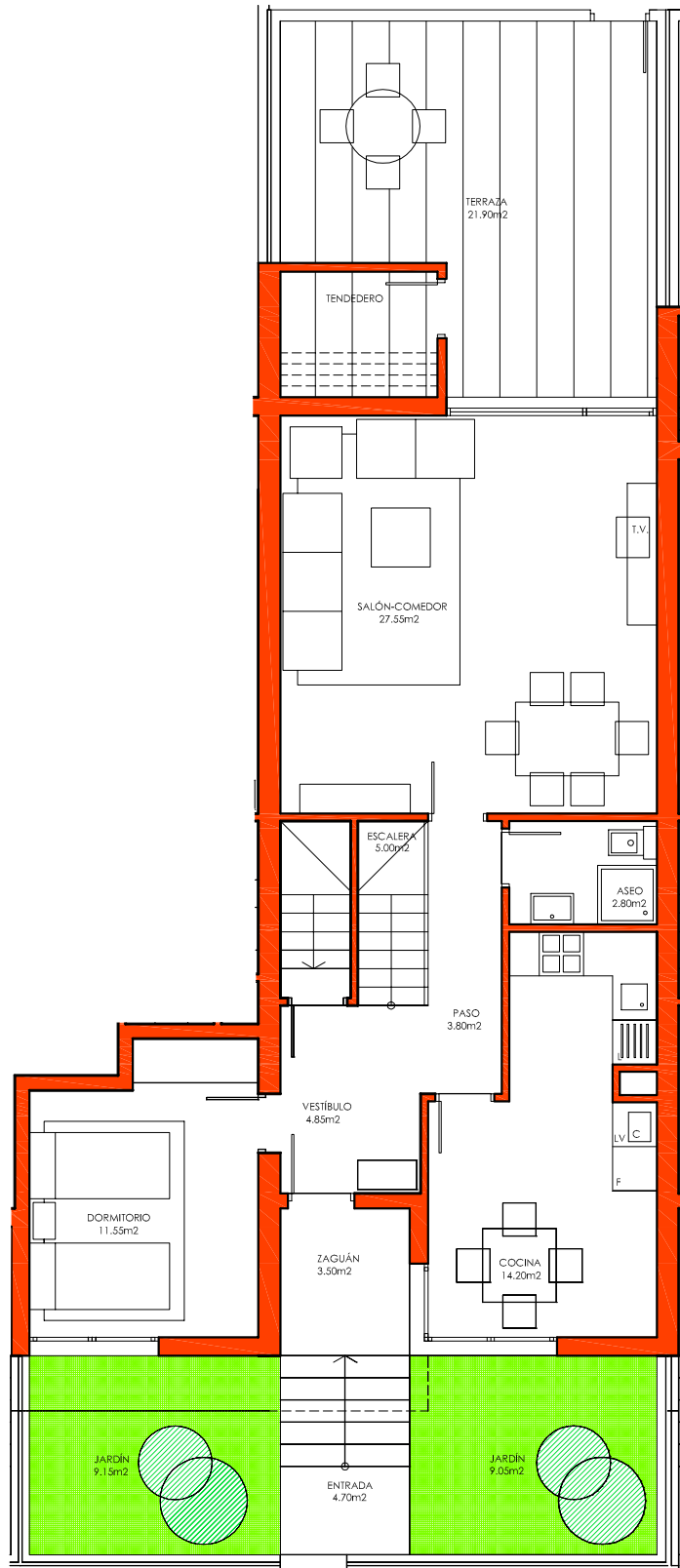


**PLANOS COMERCIALES**

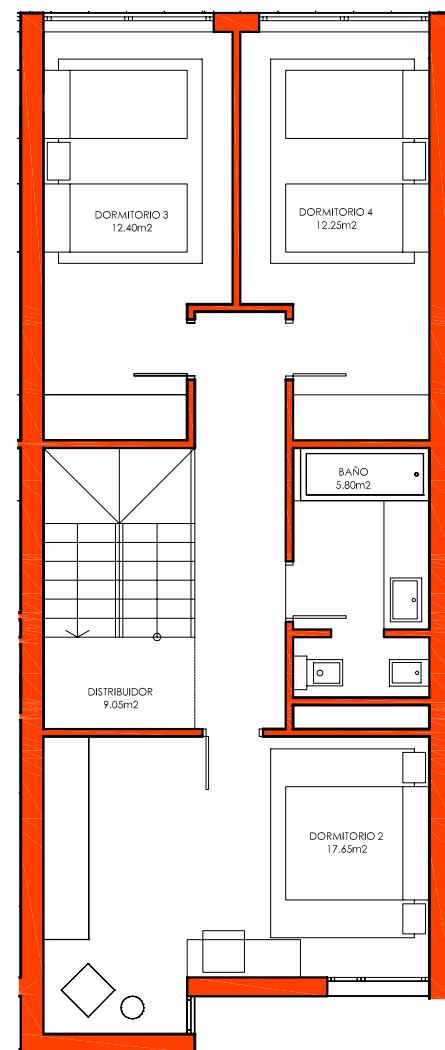
Superficies, medidas, configuración, lindes y demás información son las previstas, sujetos a posibles modificaciones por exigencias técnicas jurídicas o comerciales.



PLANTA SEMISÓTANO 73.10 m2



PLANTA BAJA 71.50 m2



PLANTA PRIMERA 57.15 m2

3 B

**SEMISÓTANO**

|              |                |
|--------------|----------------|
| Merendero    | 38.75m2        |
| Despensa     | 1.80m2         |
| Aseo         | 2.95m2         |
| Paso         | 1.80m2         |
| Garaje       | 27.80m2        |
| <b>TOTAL</b> | <b>73.10m2</b> |

**PLANTA BAJA**

|               |                |
|---------------|----------------|
| Salón-comedor | 27.55m2        |
| Cocina        | 14.20m2        |
| Aseo          | 2.80m2         |
| Vestíbulo     | 4.85m2         |
| Paso          | 3.80m2         |
| Dormitorio 1  | 11.55m2        |
| Escalera      | 5.00m2         |
| Zaguán        | 3.50/2m2       |
| <b>TOTAL</b>  | <b>71.50m2</b> |

**PLANTA PRIMERA**

|              |                |
|--------------|----------------|
| Dormitorio 2 | 17.65m2        |
| Baño         | 5.80m2         |
| Dormitorio 3 | 12.40m2        |
| Dormitorio 4 | 12.25m2        |
| Distribuidor | 9.05m2         |
| <b>TOTAL</b> | <b>57.15m2</b> |

|              |                 |
|--------------|-----------------|
| <b>TOTAL</b> | <b>201.75m2</b> |
|--------------|-----------------|

**ZONAS EXTERNAS**

|                  |                |
|------------------|----------------|
| Entrada          | 4.70m2         |
| Jardín delantero | 18.20m2        |
| Terraza          | 21.90m2        |
| Tendedero        | 3.60m2         |
| <b>TOTAL</b>     | <b>48.40m2</b> |

